



**CMMC AND DFARS  
SECURITY PORTFOLIO**  
256.716.8379  
info@riverstonesolutions.com



**EVALUATION  
AND BASELINE**

Define Scope, Evaluate and Document Initial Baseline (Policies, SSP, POAM Included)



**PLAN AND  
REMEDiate**

Identify Plan of Action for Corporate and IT Security Control Remediation



**SIEM AND  
MONITORING**

Aggregate & Analyze Security Data On-Premise; 'Monitoring as a Service' with alerts via text, ticket, email



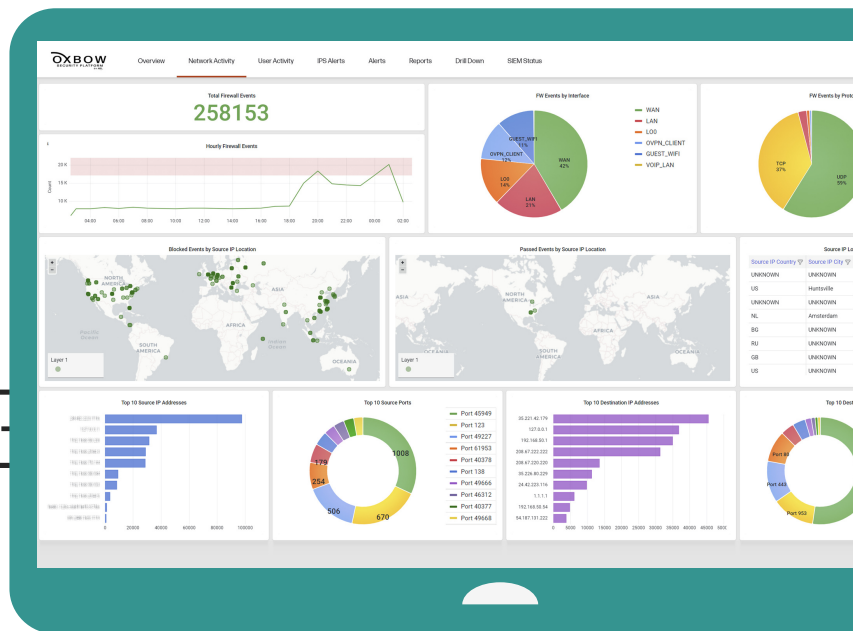
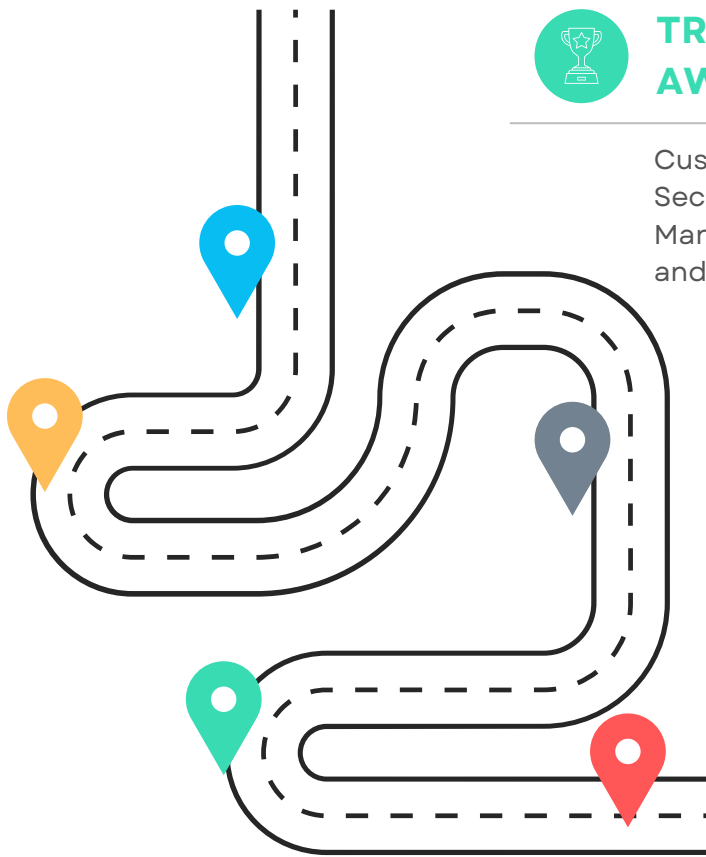
**TRAINING AND  
AWARENESS**

Customized Security Training for Management, Users and Administrators



**CONTINUOUS  
IMPROVEMENT**

Periodic Review, Risk Assessment, Corrective Actions and Reports required to Maintain Compliance



Contact us for a handcrafted roadmap customized for your business needs and unique security and compliance journey!